

## Unique business opportunity

Centrally located High Street property available to let in Wooler

Wooler is a thriving market town well established as a visitor destination in North Northumberland. A major whisky distillery development on the edge of town due to open in 2020/21 with additional projected visitor numbers of 50,000 per annum.

The property we have on offer has been a popular café and gift shop since 2008.



This property was substantially renovated to a high standard in 2007 and has:

- Large glazed frontage opening on to a busy High Street
- Kitchen
- Gas central heating
- Wheelchair accessible WC
- Fire alarm
- Intruder alarm
- EPC to follow

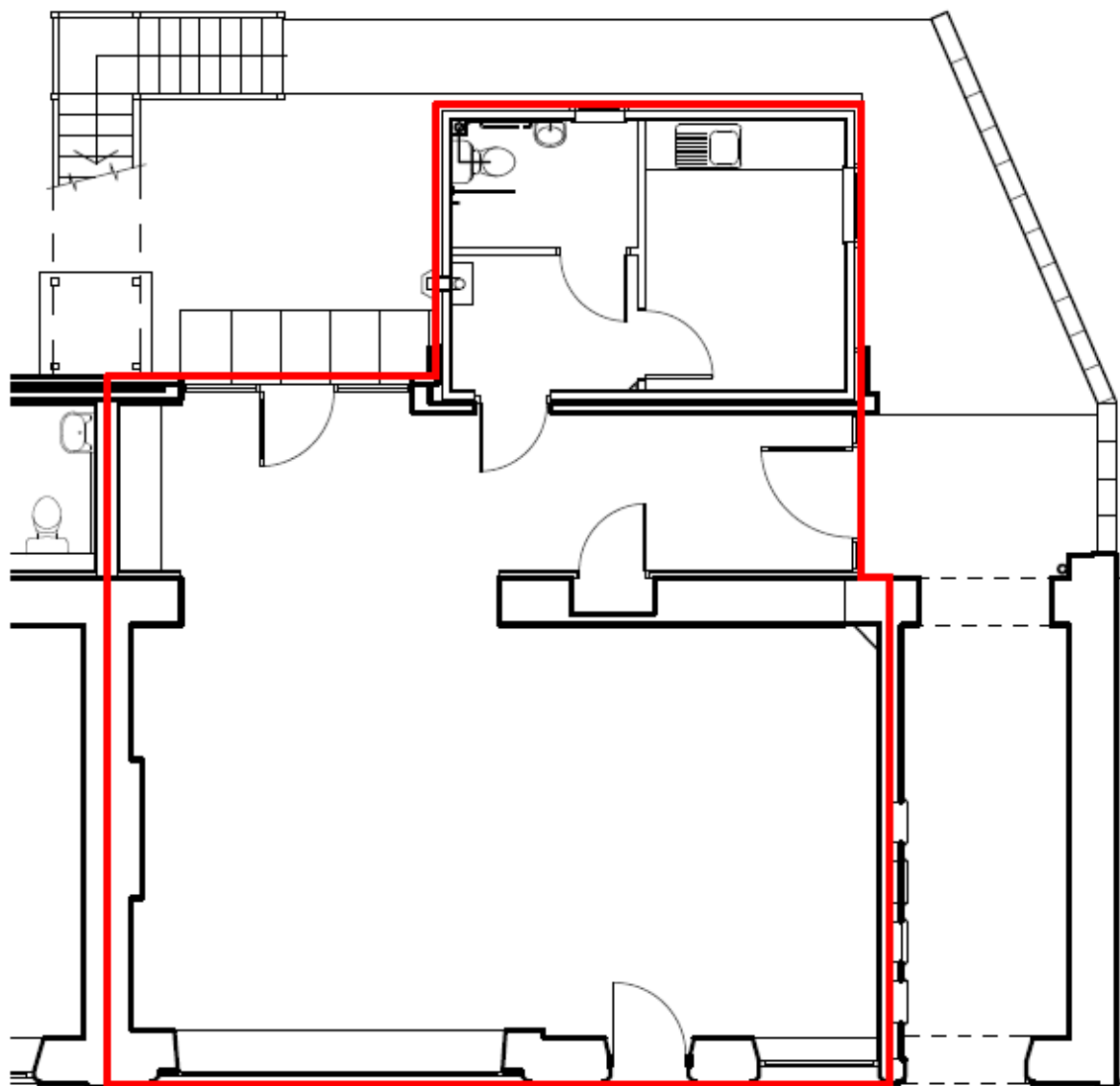
Total floor area is approximately 74m<sup>2</sup>

The property comes with vacant possession from October 2019

Price and terms of lease on application

For further details please contact Rachel Sinton on 01668 282406 or [ggtadmin@wooler.org.uk](mailto:ggtadmin@wooler.org.uk)

Internal layout of 29 High Street, Wooler



HIGH STREET